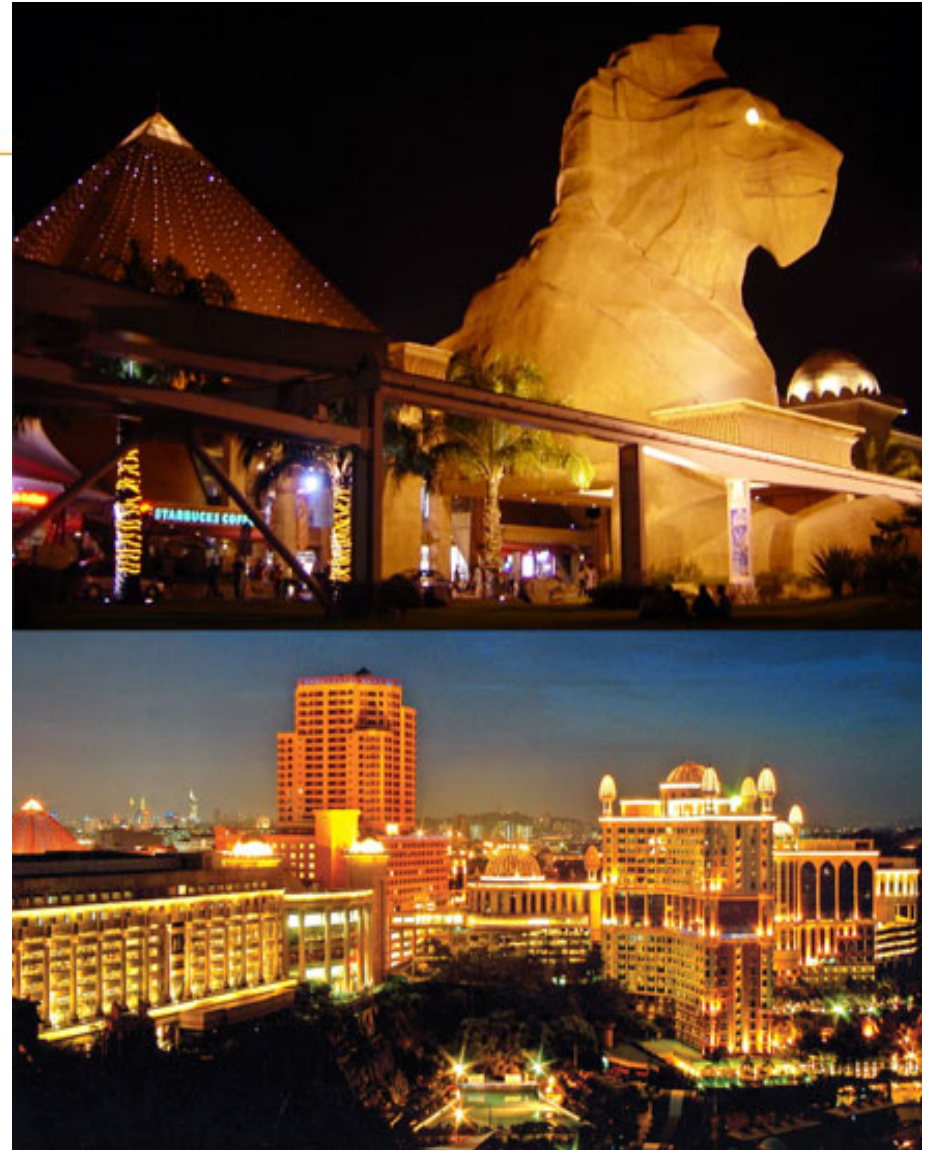


Subang Jaya Housing 2018

1. Menara Rajawali
2. Glitz Hostel
3. SS15 Hostel
4. Olive House
5. Casa-Tiara
6. Unique Hostel



Menara Rajawali

Menara Rajawali consists of 196 units of apartments which can accommodate to about 700 students, 6 floors of covered parking bay area and retail outlets located on the 1st and 2nd floors.

Menara Rajawali is part of a diverse international community. There are Japanese, Korean, Canadian, Australian, and Middle Eastern communities living around the area.



Central Location

Menara Rajawali is approximately a 5 minutes walk from ELS Subang Jaya.

Menara Rajawali is located directly opposite Starbucks Coffee and McDonalds and next to INTI, Metropolitan and Taylors University Colleges.

It is also close to amenities such as [Empire Subang](#) Gallery , Subang Courtyard, Subang Parade Shopping Centre, Carrefour Subang Hypermarket, Sime Darby Medical Centre, Sunway Pyramid Mall, Sunway Medical Centre, commuter station (KTM) and other educational institutions such as Sunway University College, Monash University and SEGI University College.



Building Facilities

- ✓ 24-hour security
- ✓ Covered parking
- ✓ Access Cards System
(lift and main door)
- ✓ Water Dispenser at every floors
(hot and cold)
- ✓ Coin Operated Laundry Services



Studio Unit (single occupancy)



Rooms attached with bathroom

Menara Rajawali Pricing

Unit Type	Internet	Fridge	Microwave	Rental /Month	Rental Deposit	Utilities Deposit	Remarks
Studio Apartment	X	√	√	RM 1,200	RM2,400	RM 600	Minimum 6 months stay (2nd - 16th Floor)
Single Room (Attached Bathroom)	X	√	√	RM 1,200	RM 2,400	RM 600	
Single Room (Non- Attached Bathroom)	X	√	√	RM 1,000	RM 2,000	RM 500	
Single Room (Attached Bathroom)	√	X	X	RM 1,100	RM 2,000	RM 550	Minimum 3 months stay (17th & 18th Floor)

** Rental is not inclusive of utilities

Glitz Hostel

Glitz Hostel consists of 33 units of single rooms fully furnished with attached bathroom.

Glitz Hostel is part of a diverse international community. There are Japanese, Korean, Canadian, Australian, and Middle Eastern communities living around the area.



Central Location

Glitz Hostel is approximately a 5 minutes walk from ELS Subang Jaya.

Glitz Hostel is located next to Canadian Pre-U Taylors University Colleges. It is just a few minutes walk from the train station, restaurants, cafes, banks, hospitals and colleges.

Fully Licensed by Majlis Perbandaran Subang Jaya (MPSJ) & Fully Supported by BOMBA.



Building Facilities

- ✓ 24hr security
- ✓ Multipurpose hall
- ✓ 1.0hp split unit air conditioner
- ✓ High Security (Guard, Card Access, CCTV)
- ✓ High Speed Internet
- ✓ 3 Common Lounges
- ✓ Laundry area
- ✓ High cleanliness



Glitz Hostel Pricing

No of Pax Per Room	Room Type	1 month rental	2 Months Deposit	Utilities Deposit
<i>Single Room (with attached bathroom)</i>				
1	Single	RM 650 x 1 = 650	RM 1,300	RM300
Total				RM 2,250
1	Single	RM 690 x 1 = 690	RM 1,380	RM300
Total				RM 2,370
<i>Medium Single Room (with attached bathroom)</i>				
1	Single	RM 720 x 1 = 720	RM 1,440	RM300
Total				RM 2,460

Additional fees:

- Check-out fee RM38
- Cleaning fee RM15

SS15 Hostel

SS15 Hostel is approximately a 3 minutes walk from ELS Subang Jaya only for boys.

SS15 Hostel consists of 7 rooms fully furnished. Strategically located in SS15 Subang Jaya. A few minutes walk from the train station, restaurants, cafes, banks, hospitals and colleges.



SS15 Hostel Facilities

Single Bedroom

- Single bed
- Table
- Chair
- Cupboard
- Air-conditioning
- Study table
- Share bathroom

Twin Sharing

- 2 Single Bed
- Table
- Chair
- Cupboard
- Air-conditioning
- Shared bathroom

Other Facilities

- Dining table & chairs
- Iron
- Water Kettle
- 2 x Refrigerator
- Microwave
- Washing machine
- Wi-Fi Internet
- Water Heater
- 4 x Toilets

SS15 Hostel Pricing

No of Pax Per Room	Room Type	Minimum 3 Months (Rental)	1 Month (Rental & Key Deposit RM200)
<i>Single Room (1, 3A, 5 & 8)</i>			
1	Single	RM 700 x 3 = 2,100	RM 900
		Total	RM 3, 000
<i>Twin Sharing Room (3, 6, 7)</i>			
2	Twin	RM 860 x 3 = 2,580	RM 1,060
		Total	RM 3, 640

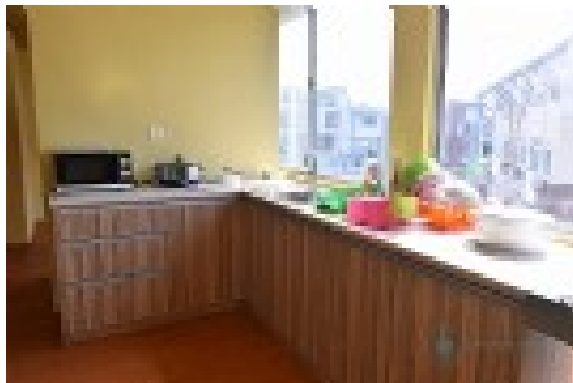
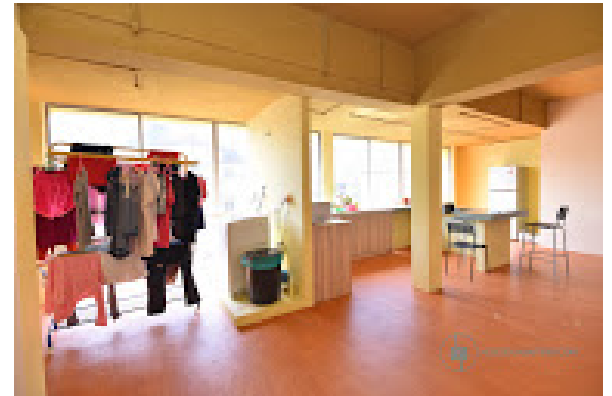
Olive House

Olive House opposite Taylor College's Canadian Pre-University building. About 5 minutes walk from ELS Subang Jaya.

Olive House 45 rooms come fully furnished with Single Beds, Wardrobes, Study Desk & Chairs, Mirrors and Air-Conditioning. Washer & dryer are also available. Everything's been prepared for a comfortable stay. Males and Females are separated. Convenient, so just bring your bags and move in.



Building Facilities



Olive House Pricing

Type of Room	Monthly Rental	Deposit	Total First Payment
Single Room	RM 680	RM 1,360	RM 2,040

Casa Tiara

Casa Tiara (also known as Tiaraville) is a service apartment located in Subang Jaya. Casa Tiara prides on its modern and contemporary landscaping and interior.

Casa Tiara is part of a diverse international community. There are Japanese, Korean, Canadian, Australian, and Middle Eastern communities living around the area.



Central Location

Casa Tiara is approximately a 10 minutes walk from ELS Subang Jaya.

Casa Tiara is located near several **healthcare centres** such as Subang Jaya Medical Centre and Bandar Sunway Hospital.

Tourism spots such as Subang Parade, Empire Subang, Sunway Lagoon, and Sunway Pyramid are in close vicinity.

Casa Tiara is easily accessible a number of **Expressways**.



Building Facilities

- ✓ Swimming pool
- ✓ 24hr security
- ✓ Gymnasium with pool view
- ✓ Outdoor gym
- ✓ Children's playground
- ✓ Cafeteria
- ✓ Squash court
- ✓ Multipurpose hall
- ✓ Community hall
- ✓ BBQ pits
- ✓ Reading room
- ✓ Games room



Swimming Pool



Gym & Communal Area



Unit Facilities

Master Bedroom

- Double bed
- Table
- Chair
- Cupboard
- Air-conditioning
- Attached bathroom

Bedroom 1 & 2

- Bed
- Table
- Chair
- Cupboard
- Air-conditioning
- Shared bathroom

Hall & Dining Area

- Dining table & chairs
- Sofa
- Coffee table

Kitchen

- Refrigerator
- Microwave

Laundry Area

- Washing machine

Bedrooms



Hall & Dining Area



Casa Tiara Pricing

Unit Type	Type of room	Rental/Month	Remarks
3 Rooms	Small Room	RM 700	1 Month Rental + 2 Months Rental Deposit + 0.5 Month Utility Deposit RM 100 - Deposit for Access Card (Refundable) Rental is not inclusive of utilities & internet
	Middle Room	RM 900	
	Master Room	RM 1,300	
Studio Unit		RM 1,300 - RM 1,700	

Unique Hostel

Unique Hostel consists of a few shop-houses that have been converted to provide comfortable rooms for students.

It is just a few minutes walk from the train station, restaurants, cafes, banks, hospitals and colleges.



Central Location

Kuala Lumpur city centre is about 15 km away and can easily be reached by rail, taxi or bus.

It is also near **Sunway Pyramid** Shopping Mall, Sunway Lagoon and Subang Parade.

It takes 5 minutes to walk to **ELS Language Centres, Subang Jaya**.



Room Amenities

Unique Hostel offers two types of rooms:

1. Single room
2. Twin sharing room

Facilities:

- Attached bathroom with water heater
- Mirror
- Air conditioner
- Single bed
- Study table and chair
- Cabinet



Facilities & Services

- ✓ Room cleaning and janitorial services.
- ✓ Laundry services provided at an additional charge.
- ✓ Pantry equipped with microwave oven, refrigerator and sink. (Cooking is not allowed)
- ✓ Clean drinking water from BIOPURE Reverse Osmosis water filter.
- ✓ Common Astro television.
- ✓ Cable/Wireless STREAMYX broadband.
- ✓ High security entrance door with CCTV surveillance.



Unique Hostel Pricing

TYPE	Rental (RM)	Rental deposit (RM)	Utilities deposit
Standard room (single)	RM700/ month	RM1, 400 (2 months)	RM200
Standard room (twin sharing)	RM800/ month	RM1, 600 (2 months)	RM200

Note 1: Monthly rental are not inclusive of utilities and Wi-Fi.

Note 2: Pillow and bed sheet are provided.

Map of Subang Jaya

Link to interactive map: [ELS Subang Jaya Map](#)





ELS[®] *Language
Centres*

**Thank you.
We look forward to having you in ELS!**